

# Eaton 93PX

## 208V rackmount 3-phase UPS



### Simple, reliable, cost-effective power for edge and data center applications

- Innovative quick-connect design for easy plug-and-play deployment and service
- Unity power factor (1.0) with 5, 7.5, 13, 15 or 20 kW capacity
- High power density up to 20 kW
- Up to 92% energy efficiency (97% in ECO mode)
- Network management cards with market-leading cybersecurity
- Configurable in parallel for N+1 redundancy (13, 15 or 20 kW)
- Auto-restart after extended utility outage
- Online, double-conversion UPS
- Backfeed and surge protection

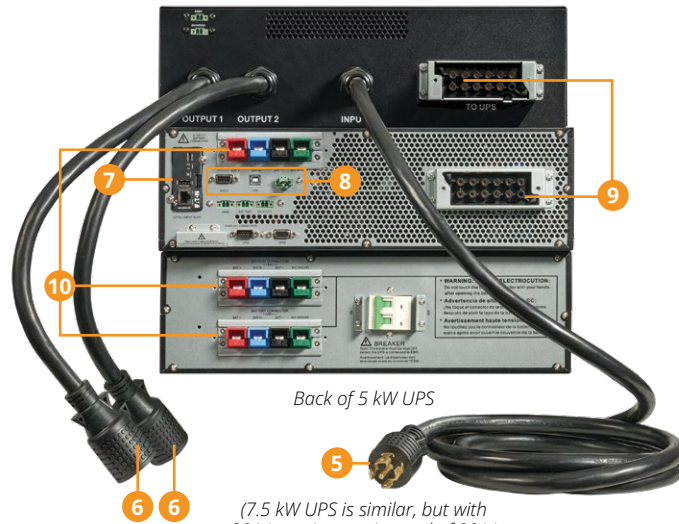


*Powering Business Worldwide*

# Feature focus



Front of 5 and 7.5 kW UPS (9U)

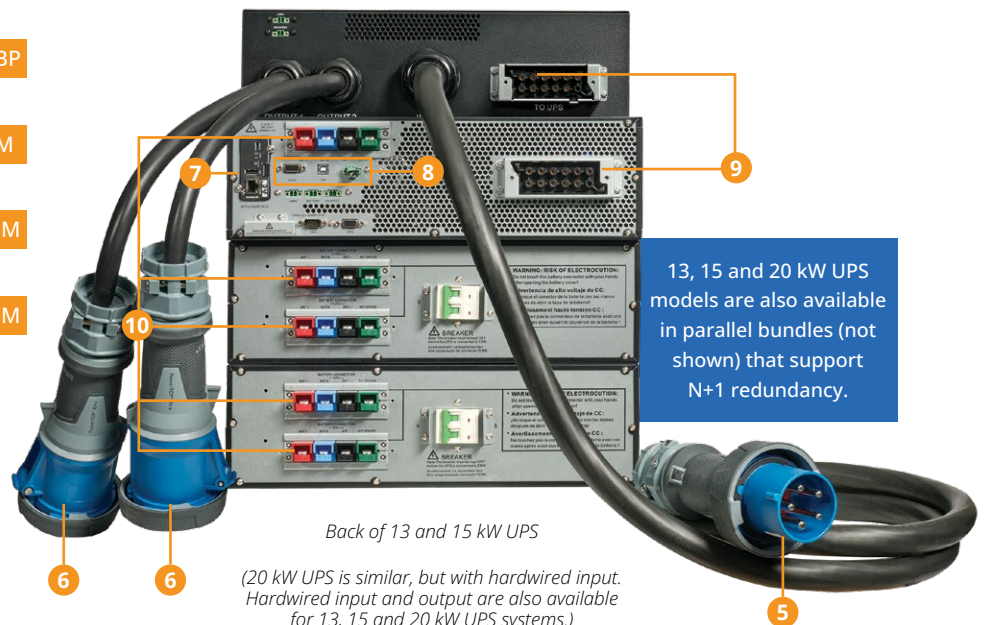


Back of 5 kW UPS

(7.5 kW UPS is similar, but with 30A input/output instead of 20A.)



Front of 13, 15 and 20 kW UPS (12U)



Back of 13 and 15 kW UPS

(20 kW UPS is similar, but with hardwired input. Hardwired input and output are also available for 13, 15 and 20 kW UPS systems.)

13, 15 and 20 kW UPS models are also available in parallel bundles (not shown) that support N+1 redundancy.

- 1 3U quick-connect power module (PM)**  
5, 7.5, 13, 15 or 20 kW capacity. The power module connects to the MBP with included cabling (not shown).
- 2 3U quick-connect maintenance bypass panel (MBP)**  
Parallel MBPs are also available for configuring dual 13, 15 or 20 kW UPS systems for N+1 redundancy.
- 3 3U quick-connect extended battery module (EBM)**  
5 and 7.5 kW models include one EBM. 13, 15 and 20 kW models include two EBMs.
- 4 LCD control panel**  
3.5-inch (89 mm) color touchscreen with multi-language display.
- 5 AC input options (via MBP)**  
5 kW: L21-20P plug with 10-foot cord. 7.5 kW: L21-30P plug with 10-foot cord. 13-15 kW: IEC 309 60A plug with 10-foot cord or hardwired. 20 kW: hardwired only.

- 6 AC output options (via MBP)**  
(Corded output connects directly to rack PDU input cords.)  
5 kW: (2) L21-20R receptacles with 2-foot cord. 7.5 kW: (2) L21-30R receptacles with 2-foot cord. 13-20 kW: (2) IEC 309 60A receptacles with 2-foot cord or hardwired.
- 7 Cybersecure network management card (NMC)**  
Network management card supports Web/SNMP (NETWORK-M3) or Modbus/Web/SNMP/BACnet (INDGW-M3) protocols.
- 8 Communication ports (RS-232, USB, EPO)**
- 9 Quick-connect ports for PM/MBP connection**  
The power module and MBP connect to each other with included cabling (not shown).
- 10 EBM connectors**  
The power module connects to the EBM(s) with included cabling.

# Ordering information

## 93PX 208V UPS bundles

Standard UPS bundles include 3U power module (PM) with network management card (NMC), 3U maintenance bypass panel (MBP) and one or two 3U extended battery modules (EBMs). 5–7.5 kW models include one EBM. 13–20 kW models include two EBMs. Parallel bundles (“PAR” suffix) support N+1 redundancy and include twice as many PMs, NMCs and EBMs as the standard bundles, combined with a 3U parallel MBP.

Catalog number	Capacity	MBP input connection	MBP output connection(s)	Rack size	Network card
93PX20K	20 kW	Hardwired	(2) IEC 309 60A (4-wire) receptacles with 2 ft. cord	12U	NETWORK-M3
93PX20KIND	20 kW	Hardwired	(2) IEC 309 60A (4-wire) receptacles with 2 ft. cord	12U	INDGW-M3
93PX20KINDPAR	20 kW (N+1)	Hardwired	(2) IEC 309 60A (4-wire) receptacles with 2 ft. cord	21U	(2) INDGW-M3
93PX20KHW	20 kW	Hardwired	Hardwired (5-wire)	12U	NETWORK-M3
93PX20KHWP	20 kW (N+1)	Hardwired	Hardwired (5-wire)	21U	(2) NETWORK-M3
93PX20KHWIND	20 kW	Hardwired	Hardwired (5-wire)	12U	INDGW-M3
93PX20KHWINDPAR	20 kW (N+1)	Hardwired	Hardwired (5-wire)	21U	(2) INDGW-M3
93PX15K	15 kW	IEC 309 60A (5-wire) plug with 10 ft. cord	(2) IEC 309 60A (4-wire) receptacles with 2 ft. cord	12U	NETWORK-M3
93PX15KIND	15 kW	IEC 309 60A (5-wire) plug with 10 ft. cord	(2) IEC 309 60A (4-wire) receptacles with 2 ft. cord	12U	INDGW-M3
93PX15KINDPAR	15 kW (N+1)	IEC 309 60A (5-wire) plug with 10 ft. cord	(2) IEC 309 60A (4-wire) receptacles with 2 ft. cord	21U	(2) INDGW-M3
93PX15KHW	15 kW	Hardwired	Hardwired (5-wire)	12U	NETWORK-M3
93PX15KHWP	15 kW (N+1)	Hardwired	Hardwired (5-wire)	21U	(2) NETWORK-M3
93PX15KHWIND	15 kW	Hardwired	Hardwired (5-wire)	12U	INDGW-M3
93PX15KHWINDPAR	15 kW (N+1)	Hardwired	Hardwired (5-wire)	21U	(2) INDGW-M3
93PX13K	13 kW	IEC 309 60A (5-wire) plug with 10 ft. cord	(2) IEC 309 60A (4-wire) receptacles with 2 ft. cord	12U	NETWORK-M3
93PX13KIND	13 kW	IEC 309 60A (5-wire) plug with 10 ft. cord	(2) IEC 309 60A (4-wire) receptacles with 2 ft. cord	12U	INDGW-M3
93PX13KINDPAR	13 kW (N+1)	IEC 309 60A (5-wire) plug with 10 ft. cord	(2) IEC 309 60A (4-wire) receptacles with 2 ft. cord	21U	(2) INDGW-M3
93PX13KHW	13 kW	Hardwired	Hardwired (5-wire)	12U	NETWORK-M3
93PX13KHWP	13 kW (N+1)	Hardwired	Hardwired (5-wire)	21U	(2) NETWORK-M3
93PX13KHWIND	13 kW	Hardwired	Hardwired (5-wire)	12U	INDGW-M3
93PX13KHWINDPAR	13 kW (N+1)	Hardwired	Hardwired (5-wire)	21U	(2) INDGW-M3
93PX8K	7.5 kW	L21-30P plug with 10 ft. cord	(2) L21-30R receptacles with 2 ft. cord	9U	NETWORK-M3
93PX8KIND	7.5 kW	L21-30P plug with 10 ft. cord	(2) L21-30R receptacles with 2 ft. cord	9U	INDGW-M3
93PX5KA (TAA compliant)	5 kW	L21-20P plug with 10 ft. cord	(2) L21-20R receptacles with 2 ft. cord	9U	NETWORK-M3
93PX5KINDA (TAA compliant)	5 kW	L21-20P plug with 10 ft. cord	(2) L21-20R receptacles with 2 ft. cord	9U	INDGW-M3

## Accessories

Catalog number	Description
93PXEBM240	Extended battery module (EBM) for 7.5–20 kW 93PX UPS systems, 3U. Minimum quantity: 1 EBM for 7.5 kW UPS; 2 EBMs for 13–20 kW non-parallel UPS; 4 EBMs for 13–20 kW parallel UPS. Maximum quantity: 5 EBMs for 7.5 kW UPS; 5 EBMs for 13–20 kW non-parallel UPS; 10 EBMs for 13–20 kW parallel UPS.
93PXEBM240A (TAA compliant)	Extended battery module (EBM) for 5 kW 93PX UPS systems, 3U. Minimum quantity: 1 EBM. Maximum quantity: 5 EBMs.
NETWORK-M3	Network management card with SNMP/Web communications and certified cybersecurity. Included with select UPS bundles.
INDGW-M3	Industrial network management card with Modbus/SNMP/Web/BACnet communications and certified cybersecurity. Included with select UPS bundles.
EMPDT1H1C2	Environmental monitoring probe with temperature, humidity and dry contact monitoring. Requires NETWORK-M3 or INDGW-M3. Connect up to 3 per card.

## Field service

93PX UPS capacity	Startup/assembly	1-year onsite flex service contract		1-year preventative maintenance contract			
		First year	Year 2+	1 PM	2 PMs	3 PMs	4 PMs
20 kW	SUAS05NXXX-93PX	W1FLN7NX20-93PX	W2FLN7NX20-93PX	0005NXXX-93PX-1	0005NXXX-93PX-2	0005NXXX-93PX-3	0005NXXX-93PX-4
13–15 kW		W1FLN7NX15-93PX	W2FLN7NX15-93PX				
5–7.5 kW		W1FLN7NX10-93PX	W2FLN7NX10-93PX				

# Comprehensive data center solutions

From edge to data center, Eaton is a single source for the products, services and support you need for your IT infrastructure. See page 7 for PDUs and rack enclosures compatible with 93PX 208V UPS systems.

[Learn more at Eaton.com/DataCenter](https://www.eaton.com/DataCenter)

# Simplified fleet management

Every 93PX UPS comes with a cybersecure network card, allowing you to monitor and manage your UPS fleet remotely for greater convenience and peace of mind.

For smaller environments, you can connect to UPS systems using a web browser and receive email alerts. For larger deployments spanning multiple locations, 93PX UPS systems integrate smoothly via SNMP with digital solutions from our **Brightlayer portfolio**.

**Brightlayer Disaster Avoidance software** helps you monitor, manage and control power equipment in physical or virtual environments with up to 25 UPSs and PDUs.

- Gracefully shut down IT equipment in the order required for safe and quick recovery from outages.
- Keep critical workloads running longer during outages by limiting server power consumption and suspending non-critical virtual machines.

**Brightlayer Distributed IT software** helps you remotely monitor and control up to thousands of UPS systems and PDUs at remote sites in any location.

- Know what's happening with real-time reports, trend charts, dashboards and alerts prioritized by severity.
- Troubleshoot and resolve issues more quickly.
- Remotely control load segments regardless of vendor.
- Update firmware remotely to improve cybersecurity.
- Leverage integrations with virtualization platform leaders.
- Gracefully shut down IT equipment.

**Brightlayer DCIM software** helps you manage power, space, connectivity and cooling to maximize uptime while minimizing capital and operating costs.

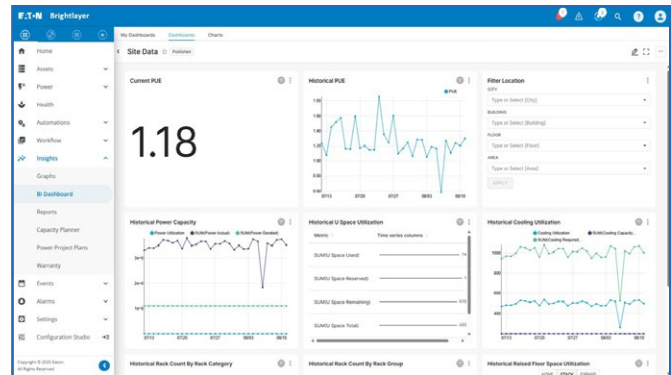
- Gain efficiencies and reduce costs with real-time data and automated alerts.
- View 2D and 3D visualizations and automated reports.
- Gain near-real-time visibility into key performance indicators.

**Brightlayer EPMS software** provides advanced monitoring and management of valuable power equipment and environmental conditions, with powerful diagnostic tools.

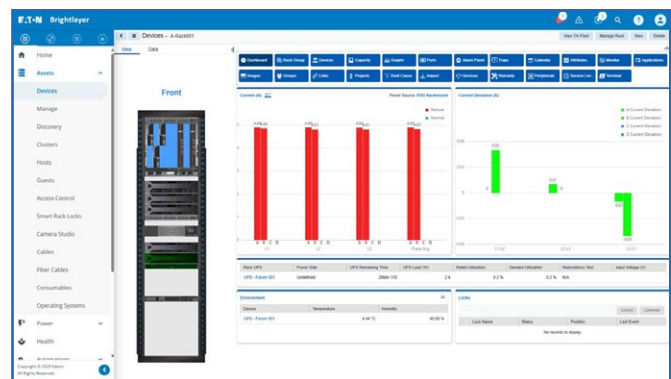
- Monitor conditions and react to issues with 24/7 visibility into electrical power assets, regardless of location or vendor.
- Identify and resolve issues through power quality and waveform analysis, high-resolution datasets and one-line diagrams.
- Access sophisticated dashboards, trend charts, energy modelling and reports.

**Brightlayer Remote Monitoring Service**, also known as PredictPulse, provides 24/7 remote monitoring and predictive analytics to forecast failures before issues arise and dispatches field service technicians when needed.

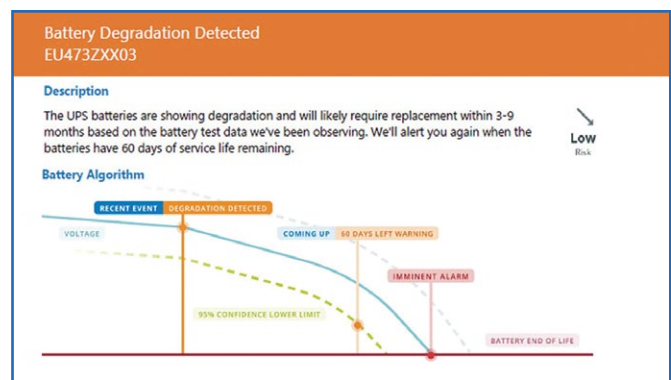
- Know about future component failures before they happen.
- Gain fast response and repairs from Eaton technicians.
- Access real-time health trends, alarms and outages prevented.



Remote power management dashboard from Brightlayer Distributed IT software.



Data center rack view from Brightlayer DCIM software.



Battery condition notification from Brightlayer Remote Monitoring Service.

# Certified cybersecurity

The included network management card complies with UL and IEC cybersecurity standards and provides industry-leading security and automation features.

## Zero-trust architecture

- Minimizes cybersecurity vulnerabilities through hardware root of trust, enabling secure boot and complete chain of trust with private hardware key encryption.

## Zero-touch provisioning

- Automatically configures equipment to save time and reduce errors in large-scale deployments.

## User-configurable firewall

- Reduces your organization's attackable surface area.
- Helps meet network/security compliance requirements.
- Supports IP white list.

## RESTful API

- Allows you to easily integrate networked UPS systems with native systems and automate M2M interactions.

## Secure access via web browser or SNMP

- Access UPS systems using the secure web browser interface or integrate with a network management system via SNMP.



For more information, download our cybersecurity solutions brief (PDF).

# Ready for virtualization, hyperconverged infrastructure and generative AI

Brightlayer software enables seamless integration and intelligent coordination with virtualized, hyperconverged and generative AI infrastructures. Support for complex orchestrations during blackouts and other power events allows you to extend runtime, preserve data and gracefully shut down or migrate servers per your preferences.

Eaton is the leader in power management for virtualization platforms and has more than 500 hours invested in testing with alliance partners like Cisco, Dell, HPE, NetApp, Nutanix, Scale Computing and VMware.

Learn more at [Eaton.com/alliances](https://Eaton.com/alliances)



# Quick and easy deployment and service

Eaton's 93PX UPS has an innovative quick-connect design for easy plug-and-play deployment and service.



Simply connect the rack PDU's AC input plug to the AC output receptacle of the UPS.

(13-20 kW UPS systems offer 4-wire IEC 309 60A output receptacles or 5-wire hardwired output, depending on the model selected.)

## Plug-and-play UPS system

- Interconnections between the UPS power module, the maintenance bypass panel and the extended battery module(s) provide easy plug-and-play setup and serviceability.

## Quick AC input connection

- 5-15 kW UPS systems can be configured with corded AC input for easy power connection.
- 13-20 kW UPS systems are also available with hardwired input.

## Quick AC output connection to rack PDUs

- All UPS systems can be configured with corded AC output receptacles, allowing you to simply plug compatible rack PDUs into the UPS.
- 13-20 kW UPS systems are also available with hardwired output.

## From unboxing to connection in a few easy steps

1. Mount the UPS modules in a standard 19-inch rack using the included hardware.
2. Connect the UPS modules together with the included cables.
3. For corded input UPS systems, plug the UPS into the utility outlet with the input power cord on the back of the maintenance bypass panel.
4. For corded output UPS systems, plug your rack PDUs into the corded AC output receptacles on the back of the maintenance bypass panel. (See page 7 for compatible Eaton rack PDU options.)

## Key applications

### High-density IT infrastructure

- Eaton's 93PX provides up to 20 kW of critical backup power for high-density applications.
- Mounts in a standard 19-inch IT rack or rack enclosure.
- Small rack footprint and high power density save valuable data center white space.
- Allows IT managers to monitor and control power in distributed and edge deployments.
- Included network management card provides best-in-class cybersecurity.
- Provides up to 97% efficiency in ECO mode to reduce energy consumption and operating costs.



### Commercial buildings and industrial facilities

- Can be deployed outside data center environments and supports challenging loads.
- Select bundles include an industrial gateway card (INDGW-M3) to support key commercial/ industrial protocols like Modbus, BACnet and SNMP.



### Healthcare

- Compact footprint saves space in cramped hospitals, clinics and other medical facilities.
- Adapts to rack or standalone installation, making it adaptable to different healthcare setups.
- Online double-conversion operation with pure sine wave power and zero transfer time supports medical devices requiring the highest power quality, stability and reliability.



# Complete your solution with Eaton

## Eaton rack PDUs

**Basic PDUs** provide reliable power distribution with branch circuit protection. **Metered input PDUs** include remote management with bank-level monitoring. **Metered outlet PDUs** include remote management with outlet-level monitoring. **Managed PDUs** are our most advanced rack PDUs and include remote management with outlet-level monitoring and control. PDUs shown below are vertical PDUs (0U), except EMIU29-06 (2U horizontal).

UPS bundle	Compatible managed PDUs	Compatible metered outlet PDUs	Compatible metered input PDUs	Compatible basic PDUs
93PX20K <sup>1</sup>	EVM4609X <sup>4</sup> (17.3 kW; 24xC13, 18xC39)	EVMOGU23A-E <sup>5</sup> +CBL356-10 <sup>6</sup> (17.3 kW; 12xC13, 12xC39)	EMIU29-06 <sup>7</sup> (17.3 kW; 6xL6-30R; 2U)	EVBAGU23X-E <sup>5</sup> +CBL356-10 <sup>6</sup> (17.3 kW; 24xC13, 18xC39)
93PX20KIND <sup>1</sup>	EVMAGU23X-E <sup>5</sup> +CBL356-10 <sup>6</sup> (17.3 kW; 24xC13, 18xC39)	EVMOGU23X-E <sup>5</sup> +CBL356-10 <sup>6</sup> (17.3 kW; 24xC13, 18xC39)	EVM4609X <sup>4</sup> (17.3 kW; 24xC13, 18xC39)	
93PX20KINDPAR <sup>1</sup>	EVMAGU23X <sup>5</sup> +CBL356-10 <sup>6</sup> (17.3 kW; 24xC13, 18xC39)	EVMOGU23X <sup>5</sup> +CBL356-10 <sup>6</sup> (17.3 kW; 24xC13, 18xC39)	EVMIGU23X-E <sup>5</sup> +CBL356-10 <sup>6</sup> (17.3 kW; 24xC13, 18xC39)	
93PX20KHW <sup>2</sup>				
93PX20KHWPAR <sup>2</sup>	EVMAGU23A-E <sup>5</sup> +CBL357-10 (17.3 kW; 12xC13, 12xC39)	EVMOGU23A-E <sup>5</sup> +CBL357-10 (17.3 kW; 12xC13, 12xC39)	EVMIGU23A-E <sup>5</sup> +CBL357-10 (17.3 kW; 12xC13, 12xC39)	EVBAGU23X-E <sup>5</sup> +CBL357-10 (17.3 kW; 24xC13, 18xC39)
93PX20KHWIND <sup>2</sup>	EVMAGU23X-E <sup>5</sup> +CBL357-10 (17.3 kW; 24xC13, 18xC39)	EVMOGU23X-E <sup>5</sup> +CBL357-10 (17.3 kW; 24xC13, 18xC39)	EVMIGU23X-E <sup>5</sup> +CBL357-10 (17.3 kW; 24xC13, 18xC39)	
93PX20KHWINDPAR <sup>2</sup>	EVMAGU23X <sup>5</sup> +CBL357-10 (17.3 kW; 24xC13, 18xC39)	EVMOGU23X <sup>5</sup> +CBL357-10 (17.3 kW; 24xC13, 18xC39)	EVMIGU23X <sup>5</sup> +CBL357-10 (17.3 kW; 24xC13, 18xC39)	
93PX15K <sup>3</sup>				
93PX15KIND <sup>3</sup>	EVM4609X <sup>4</sup> (17.3 kW; 24xC13, 18xC39)	EVMOGU23A-E <sup>5</sup> +CBL356-10 <sup>6</sup> (17.3 kW; 12xC13, 12xC39)	EMIU29-06 <sup>7</sup> (17.3 kW; 6xL6-30R; 2U)	EVBAGU23X-E <sup>5</sup> +CBL356-10 <sup>6</sup> (17.3 kW; 24xC13, 18xC39)
93PX15KINDPAR <sup>3</sup>	EVMAGU23X-E <sup>5</sup> +CBL356-10 <sup>6</sup> (17.3 kW; 24xC13, 18xC39)	EVMOGU23X-E <sup>5</sup> +CBL356-10 <sup>6</sup> (17.3 kW; 24xC13, 18xC39)	EVM4609X <sup>4</sup> (17.3 kW; 24xC13, 18xC39)	
93PX15KINDPAR <sup>3</sup>	EVMAGU23X <sup>5</sup> +CBL356-10 <sup>6</sup> (17.3 kW; 24xC13, 18xC39)	EVMOGU23X <sup>5</sup> +CBL356-10 <sup>6</sup> (17.3 kW; 24xC13, 18xC39)	EVMIGU23X-E <sup>5</sup> +CBL356-10 <sup>6</sup> (17.3 kW; 24xC13, 18xC39)	
93PX15KHW <sup>2</sup>				
93PX15KHWPAR <sup>2</sup>	EVMAGU23A-E <sup>5</sup> +CBL357-10 (17.3 kW; 12xC13, 12xC39)	EVMOGU23A-E <sup>5</sup> +CBL357-10 (17.3 kW; 12xC13, 12xC39)	EVMIGU23A-E <sup>5</sup> +CBL357-10 (17.3 kW; 12xC13, 12xC39)	EVBAGU23X-E <sup>5</sup> +CBL357-10 (17.3 kW; 24xC13, 18xC39)
93PX15KHWIND <sup>2</sup>	EVMAGU23X-E <sup>5</sup> +CBL357-10 (17.3 kW; 24xC13, 18xC39)	EVMOGU23X-E <sup>5</sup> +CBL357-10 (17.3 kW; 24xC13, 18xC39)	EVMIGU23X-E <sup>5</sup> +CBL356-10 <sup>6</sup> (17.3 kW; 24xC13, 18xC39)	
93PX15KHWINDPAR <sup>2</sup>	EVMAGU23X <sup>5</sup> +CBL357-10 (17.3 kW; 24xC13, 18xC39)	EVMOGU23X <sup>5</sup> +CBL357-10 (17.3 kW; 24xC13, 18xC39)	EVMIGU23X <sup>5</sup> +CBL357-10 (17.3 kW; 24xC13, 18xC39)	
93PX13K <sup>3</sup>				
93PX13KIND <sup>3</sup>	EVM4609X <sup>4</sup> (17.3 kW; 24xC13, 18xC39)	EVMOGU23A-E <sup>5</sup> +CBL356-10 <sup>6</sup> (17.3 kW; 12xC13, 12xC39)	EMIU29-06 <sup>7</sup> (17.3 kW; 6xL6-30R; 2U)	EVBAGU23X-E <sup>5</sup> +CBL356-10 <sup>6</sup> (17.3 kW; 24xC13, 18xC39)
93PX13KINDPAR <sup>3</sup>	EVMAGU23X-E <sup>5</sup> +CBL356-10 <sup>6</sup> (17.3 kW; 24xC13, 18xC39)	EVMOGU23X-E <sup>5</sup> +CBL356-10 <sup>6</sup> (17.3 kW; 24xC13, 18xC39)	EVM4609X <sup>4</sup> (17.3 kW; 24xC13, 18xC39)	
93PX13KINDPAR <sup>3</sup>	EVMAGU23X <sup>5</sup> +CBL356-10 <sup>6</sup> (17.3 kW; 24xC13, 18xC39)	EVMOGU23X <sup>5</sup> +CBL356-10 <sup>6</sup> (17.3 kW; 24xC13, 18xC39)	EVMIGU23X-E <sup>5</sup> +CBL356-10 <sup>6</sup> (17.3 kW; 24xC13, 18xC39)	
93PX13KHW <sup>2</sup>				
93PX13KHWPAR <sup>2</sup>	EVMAGU23A-E <sup>5</sup> +CBL357-10 (17.3 kW; 12xC13, 12xC39)	EVMOGU23A-E <sup>5</sup> +CBL357-10 (17.3 kW; 12xC13, 12xC39)	EVMIGU23A-E <sup>5</sup> +CBL357-10 (17.3 kW; 12xC13, 12xC39)	EVBAGU23X-E <sup>5</sup> +CBL357-10 (17.3 kW; 24xC13, 18xC39)
93PX13KHWIND <sup>2</sup>	EVMAGU23X-E <sup>5</sup> +CBL357-10 (17.3 kW; 24xC13, 18xC39)	EVMOGU23X-E <sup>5</sup> +CBL357-10 (17.3 kW; 24xC13, 18xC39)	EVMIGU23X-E <sup>5</sup> +CBL357-10 (17.3 kW; 24xC13, 18xC39)	
93PX13KHWINDPAR <sup>2</sup>	EVMAGU23X <sup>5</sup> +CBL357-10 (17.3 kW; 24xC13, 18xC39)	EVMOGU23X <sup>5</sup> +CBL357-10 (17.3 kW; 24xC13, 18xC39)	EVMIGU23X <sup>5</sup> +CBL357-10 (17.3 kW; 24xC13, 18xC39)	
93PX8K <sup>3</sup>				
93PX8KIND <sup>3</sup>	EVM42130X (8.6 kW; 24xC13, 18xC39)	EMOCPD36JEY2K3 <sup>7</sup> (8.6 kW; 21xC13, 12x5-20R)	EVM42130X (8.6 kW; 24xC13, 18xC39)	PDU3V6L2130 <sup>7</sup> (8.6 kW; 36xC13, 6xC19, 6x5-20R)
93PX8KIND <sup>3</sup>	EVMAGU23X-E <sup>5</sup> +CBL351-10 (8.6 kW; 24xC13, 18xC39)	EVMOGU23X-E <sup>5</sup> +CBL351-10 (8.6 kW; 24xC13, 18xC39)	EVMIGU23X-E <sup>5</sup> +CBL351-10 (8.6 kW; 24xC13, 18xC39)	EVBAGU23X-E <sup>5</sup> +CBL351-10 (8.6 kW; 24xC13, 18xC39)
93PX8KIND <sup>3</sup>	EVMAGU23X <sup>5</sup> +CBL351-10 (8.6 kW; 24xC13, 18xC39)	EVMOGU23X <sup>5</sup> +CBL351-10 (8.6 kW; 24xC13, 18xC39)	EVMIGU23X <sup>5</sup> +CBL351-10 (8.6 kW; 24xC13, 18xC39)	
93PX5KA <sup>3</sup>				
93PX5KINDA <sup>3</sup>	EVM42120A (5.8 kW; 12xC13, 12xC39)	EMOCPB36JA2Y2K3 <sup>7</sup> (5.8 kW; 15xC13, 12x5-20R)	EMIB18-10 (5.8 kW; 30xC13, 6xC19, 3x5-20R)	PDU3V6L2120LV <sup>7</sup> (5.7 kW; 42x5-20R)
93PX5KINDA <sup>3</sup>	EVMAGU23X-E <sup>5</sup> +CBL367-10 (5.8 kW; 24xC13, 18xC39)	EVMOGU23X-E <sup>5</sup> +CBL367-10 (5.8 kW; 24xC13, 18xC39)	EVMIGU23X-E <sup>5</sup> +CBL367-10 (5.8 kW; 24xC13, 18xC39)	EVBAGU23X-E <sup>5</sup> +CBL367-10 (5.8 kW; 24xC13, 18xC39)
93PX5KINDA <sup>3</sup>	EVMAGU23X <sup>5</sup> +CBL367-10 (5.8 kW; 24xC13, 18xC39)	EVMOGU23X <sup>5</sup> +CBL367-10 (5.8 kW; 24xC13, 18xC39)	EVMIGU23X <sup>5</sup> +CBL367-10 (5.8 kW; 24xC13, 18xC39)	

**C39 outlets:** Flexible C39 outlets combine the functionality of C13 and C19 outlets. **Input power cord length:** 10 ft. unless noted. **Other notes:** (1) UPS with hardwired input and corded output. (2) UPS with hardwired input and output. (3) UPS with corded input and output. (4) Add “-06” to model number for 6 ft. input power cord. (5) Universal-input PDU (UPDU) compatible with variety of interchangeable input power cords. Capacity is 5–23 kW, depending on input power cord. UPDUs ending with “-E” have end-entry input cord connection. Others have front-entry (perpendicular) connection. (6) Change “-10” to “-06” in cord model number for 6 ft. input power cord. (7) Includes 6 ft. input power cord.



Don't see the PDU you need? Find more at [RackPDUselector.Eaton.com](https://RackPDUselector.Eaton.com)

## Eaton rack enclosures

Eaton 93PX 208V UPS systems are compatible with standard EIA 19-inch rack enclosures with a maximum device depth of at least 37 inches (940 mm).

Catalog number	Type	Height	Width	Maximum device depth	Weight capacity (Static/dynamic)	Color
SR25UB	Standard	25U	23.6 in. (600 mm)	37 in. (940 mm)	3500/2250 lb. (1588/1021 kg)	Black
SR42UB	Standard	42U	23.6 in. (600 mm)	37 in. (940 mm)	3500/2250 lb. (1588/1021 kg)	Black
SR42UBDP	Standard deep	42U	23.6 in. (600 mm)	42 in. (1067 mm)	3500/2250 lb. (1588/1021 kg)	Black
SR42UBDPWD8	Standard deep/wide	42U	31.5 in. (800 mm)	44 in. (1118 mm)	3500/2250 lb. (1588/1021 kg)	Black
SR42UBEIS	Industrial	42U	23.6 in. (600 mm)	37 in. (940 mm)	3500/2250 lb. (1588/1021 kg)	Black
SR42UBZ4	Seismic	42U	23.6 in. (600 mm)	37 in. (940 mm)	3500/2250 lb. (1588/1021 kg)	Black
SR45UB	Standard	45U	23.6 in. (600 mm)	37 in. (940 mm)	3500/2250 lb. (1588/1021 kg)	Black
SR45UBDP	Standard deep	45U	23.6 in. (600 mm)	42 in. (1067 mm)	3500/2250 lb. (1588/1021 kg)	Black
SR48UB	Standard	48U	23.6 in. (600 mm)	37 in. (940 mm)	3500/2250 lb. (1588/1021 kg)	Black
SR48UBDP	Standard deep	48U	23.6 in. (600 mm)	42 in. (1067 mm)	3500/2250 lb. (1588/1021 kg)	Black



Don't see the rack you need? Find more at [TrippLite.Eaton.com/racks](https://TrippLite.Eaton.com/racks)

## Eaton 93PX 208V UPS technical specifications

Power rating	5 kW	7.5 kW	13 kW	15 kW	20 kW
Phase (in/out)	3-phase, 4W + ground (Wye in/Wye out)		Hardwired output: 3-phase, 4W + ground (Wye in/Wye out); Corded output: 3-phase, 3W + ground (Delta)		

### Input characteristics

Nominal voltage	208 VAC (Ph-Ph)/120 VAC (Ph-N)				
Input voltage range	121–270 VAC (Ph-Ph) @ 50% load; 161–253 VAC (Ph-Ph) @ 100% load				
Frequency range	50/60 Hz ± 4 Hz in line mode, auto-sensing				
Nominal input current	16A	24A	48A	48A	71A
Backfeed protection	Yes				
Power factor	> 0.99 @ 100% R/RCD load, 208 VAC (Ph-Ph)				
Input harmonic distortion (THDi)	< 4% @ full linear load				
AC input connection (via MBP)	L21-20P, 10 ft. cord	L21-30P, 10 ft. cord	IEC 309 60A, 10 ft. cord (or hardwired)		Hardwired

### Output characteristics

Power factor	1.0				
Output voltage	208 VAC (Ph-Ph)/120 VAC (Ph-N)				
Voltage regulation	± 1%				
Output frequency	50/60 Hz, 60 Hz default				
Frequency regulation	± 0.1 Hz				
Nominal output current	13.9A	20.9A	36.2A	41.7A	55.6A
Current crest ratio (maximum)	3:1				
Harmonic distortion (THDv)	≤ 2% (linear load), ≤ 5% (non-linear load)				
Transfer time	AC to battery mode: zero; Inverter to bypass: zero				
Waveform (battery mode)	Pure sine wave				
Overload (AC mode)	102–110% for 60 min.; 110–125% for 10 min.; 125–150% for 1 min.; ≥ 150% for 0.4 sec.				
Overload (battery mode)	102–110% for 60 min.; 110–125% for 10 min.; 125–150% for 1 min.; ≥ 150% for 0.4 sec.				
Overload (bypass mode)	5–15 kW: <130% continuously; ≥ 130% for 1 min.   20 kW: <110% continuously; 110–125% for 10 min.; 126–150% for 1 min.; ≥ 150% for 1 sec.				
Output connections (via MBP)	(2) L21-20R, 2 ft. cord	(2) L21-30R, 2 ft. cord	(2) IEC 309 60A, 2 ft. cord or hardwired		
Parallel configuration	Not available		2 power modules parallel for redundancy only		

### Battery and charger

DC voltage	± 120 VDC				
Battery quantity per module (EBM)	20 pcs (10 Ah) per EBM				
Charger current	2–10A, user-adjustable (2A default)		2–10A, user-adjustable (4A default)		
Minimum battery modules (EBMs)	1 EBM		2 EBMs		
Maximum battery modules (EBMs)	5 EBMs		5 EBMs (10 EBMs for parallel bundles, with 5 EBMs per UPS)		
Float voltage	± 13.65V/pc				
Max charging voltage	± 14.1V/pc				
Charger temperature compensation	± 3 mV/°C/cell				
Low voltage cutoff/shutdown	10.7V/pc				
Estimated backup runtime (100%/50% load)	1 EBM: 13/31 min.	1 EBM: 7/20 min.	2 EBMs: 10/26 min. 4 EBMs: 23/53 min.	2 EBMs: 8/20 min. 4 EBMs: 19/45 min.	2 EBMs: 5/13 min. 4 EBMs: 13/32 min.
Battery charger	Advanced 3-stage smart charger				
Recharge time to 90%	≤ 5.4 hr. (1 EBM)		≤ 5.2 hr. (2 EBMs)	≤ 5.0 hr. (2 EBMs)	≤ 4.8 hr. (2 EBMs)
Battery type	VRLA, 10 Ah				
EBM connection cables	Quick-connect cables with Anderson connectors				

Efficiency	5 kW	7.5 kW	13 kW	15 kW	20 kW
Online mode (50%/100% load)	≥ 92% / ≥ 91%				
ECO mode (50%/100% load)	≥ 96% / ≥ 97%				
Battery mode (50%/100% load)	≥ 92% / ≥ 91%				

### Dimensions

Power module unit dimensions (DxWxH)	31.7 x 17.2 x 5.2 in. (806.3 x 438 x 131 mm) 3U rack size				
Power module unit weight	73.9 lb. (33.5 kg)	77.2 lb. (35 kg)	79.4 lb. (36 kg)	79.4 lb. (36 kg)	83.78 lb. (38 kg)
EBM unit dimensions (DxWxH)	1 EBM: 30.8 x 17.2 x 5.2 in. (781.5 x 438 x 131 mm) 3U rack size		2 EBMs: 30.8 x 17.2 x 10.3 in. (781.5 x 438 x 262 mm) 6U rack size		
EBM unit weight	1 EBM: 173 lb. (78.5 kg)		2 EBMs: 346 lb. (157 kg)		

### Environment

Operating temperature	32 to 104°F (0 to 40°C)				
Storage temperature	PM and MBP: 5 to 140°F (-15 to 60°C); EBM: 5 to 104°F (-15 to 40°C)				
Relative humidity	< 95% (non-condensing)				
Operating altitude	No derating up to 3280 ft. (1000 m); 1% derating per 328 ft. (1000 m) above 3280 ft. (1000 m)				
Noise level @ 1 m	< 58 dB	< 58 dB	< 60 dB	< 60 dB	< 67 dB

### Management

Control panel	3.5-inch (89 mm) color LCD touchscreen with multi-language display (English, Spanish, French)				
Network management card (included with select UPS bundles)	NETWORK-M3 (SNMP/Web and UL/IEC certified cybersecurity.)				
Industrial network management card (included with select UPS bundles)	INDGW-M3 (Modbus/SNMP/Web/BACnet and UL/IEC certified cybersecurity.)				
Environmental monitoring probe (optional)	EMPDT1H1C2 (Provides temperature, humidity and dry contact monitoring. Supports daisy-chaining up to three probes. Requires NETWORK-M3 or INDGW-M3 network management card.)				
Other ports	RS-232, USB and EPO				

### Approvals

Safety (USA and Canada)	UL1778:2014 (5th Ed) R4-28-2023, CAN/CSA-C22.2 No. 107.3-14 (3rd Ed)+G11 (R:2017-10)
FCC/ICES	Class A; 47 CFR FCC Part 15 Subpart B; ICES-003 Issue 7
Safety (international)	IEC62040-1:2017+A1:2021+A2:2022
EMI/EMC	EN61000-3-12:2011; IEC62040-2:2016
Surge protection	IEC/EN-61000-4-5
Vibration, shock, drop testing	According to ISTA standards
Other	TAA compliant (93PX5KA and 93PX5KINDA); RoHS compliant (all models)

### Warranty

Limited product warranty period	2 years (U.S. and Canada)
---------------------------------	---------------------------

Each UPS system includes a power module (PM), maintenance bypass panel (MBP) and one or two extended battery modules (EBMs). Due to continuing improvements, specifications are subject to change without notice.

Learn more at: [Eaton.com/93PXUPS](https://www.eaton.com/93PXUPS)

**Eaton**  
1000 Eaton Boulevard  
Cleveland, OH 44122  
United States  
Eaton.com

© 2026 Eaton  
All Rights Reserved  
Printed in USA  
Publication No. BR153192EN / 25-11-016  
February 2026

**EATON**  
Powering Business Worldwide

Eaton is a registered trademark.

All other trademarks are property of their respective owners.

Follow us on social media to get the latest product and support information.

